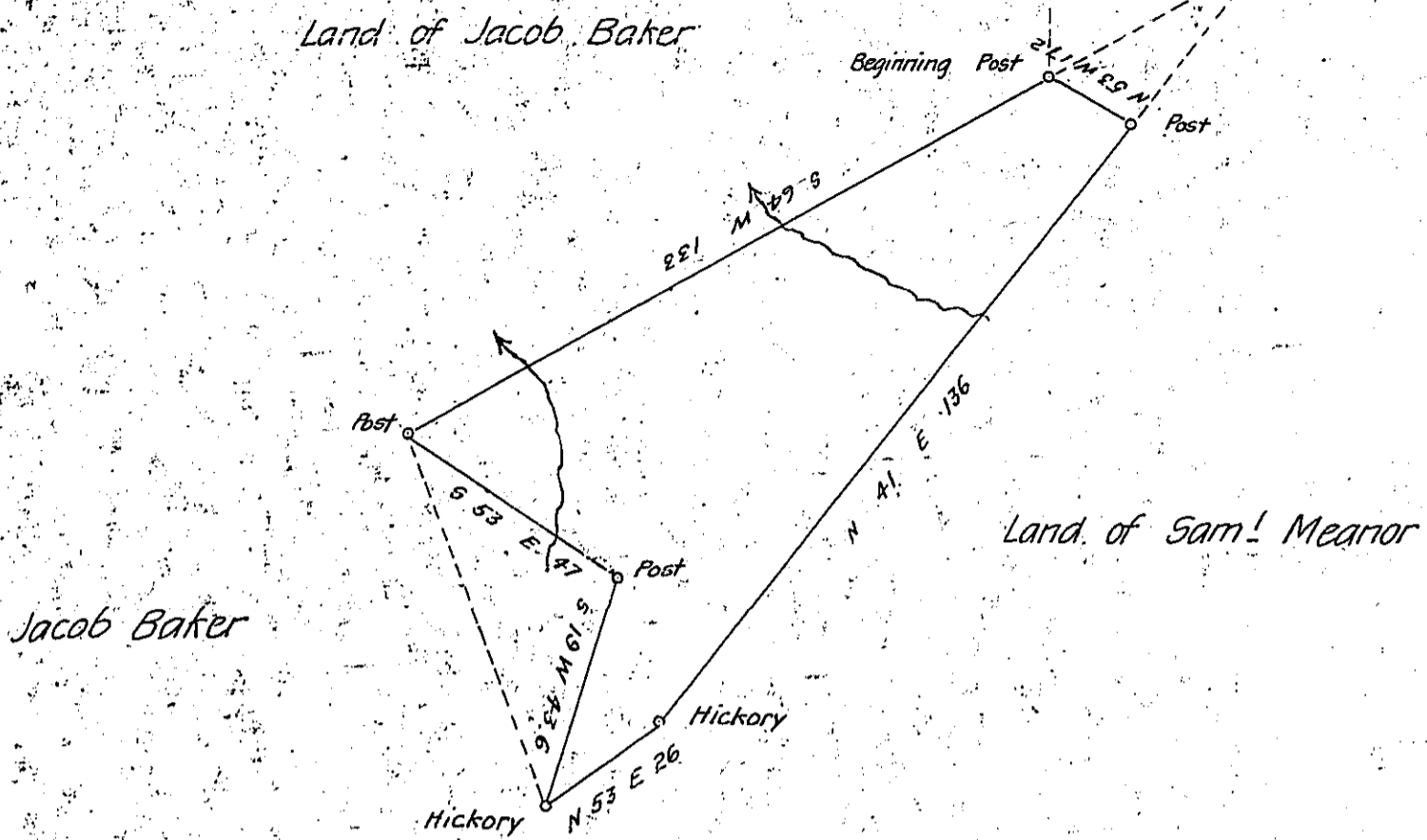


Moon
BEAVER ✓



dated 29th Jan'y 1840

The above represents a Survey made in pursuance of a Warrant granted to Saml Mearnor for Forty Eight Acres of land Situate in Moon Township Beaver County Penna Containing thirty five Acres and Sixty Six Perches * Strict Measure Surveyed Feb'y 12-1840

J. A. Veazey D.S.

To Jacob Sallade Esq. S. G.

* The dotted lines represent the survey upon which application was made for the warrant; but that Survey was incorrect - This at the S.W. end of the survey ran through the lines of Jacob Baker - That at N.E. represents a part of the same sold by Saml. Mearnor to Danl. Weigle Jr. previous to the Application for the Warrant upon which - Weigle would not have the warrant laid. This will account for the return being so much less than the warrant

IN TESTIMONY that the above is a copy of the original remaining on file in the Department of Internal Affairs of Pennsylvania, made conformably to an Act of Assembly approved the 16th day of February, 1833, I have hereunto set my Hand and caused the Seal of said Department to be affixed at Harrisburg, this eighth day of March 1906

Joseph D. Brown
Secretary of Internal Affairs.